

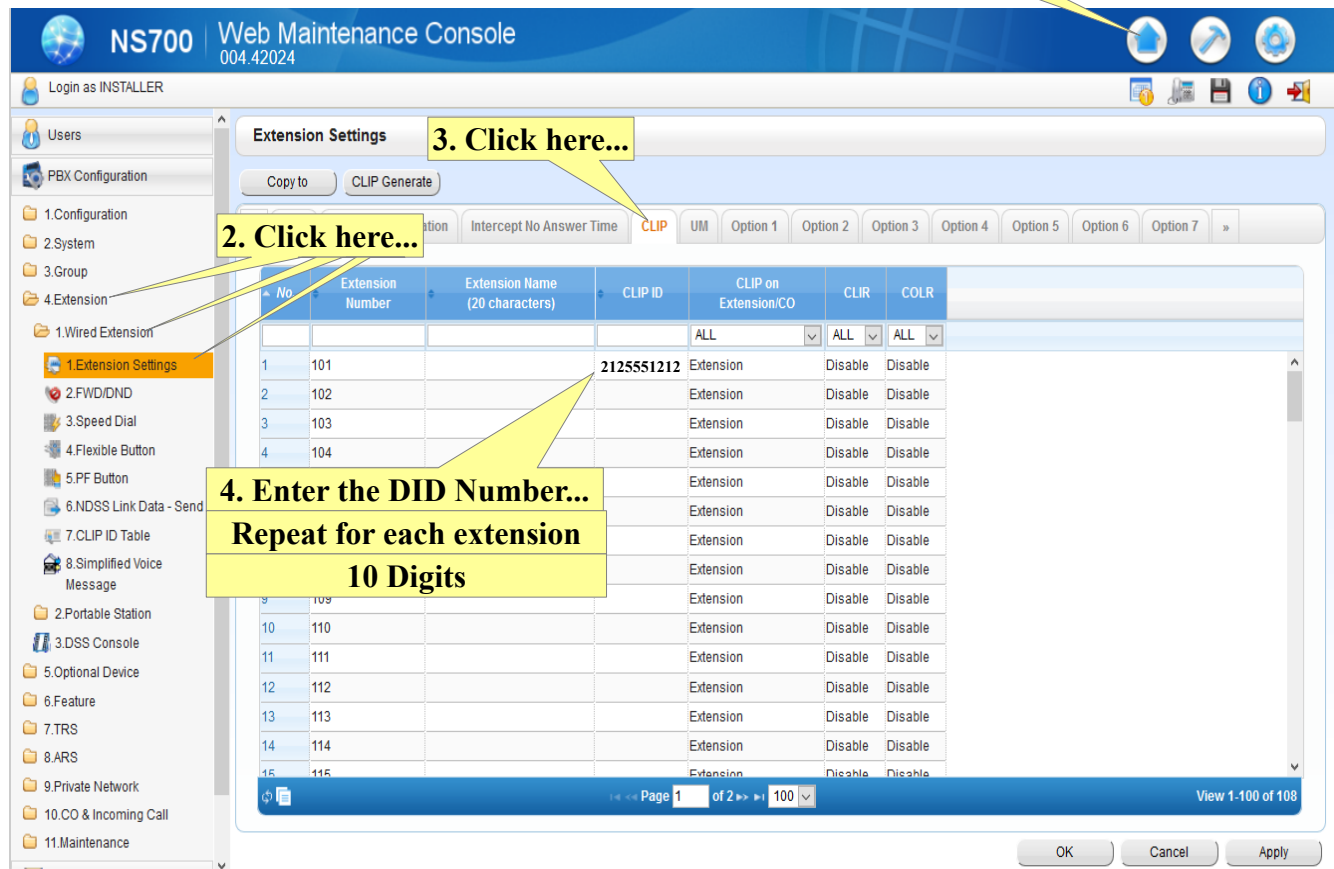
Panasonic NS-700 System

Send Extensions DID Number (CLIP) via SIP

Telquest Tech Support

Set the DID Number (CLIP)

1. Click here...



Extension Settings

Copy to CLIP Generate

Intercept No Answer Time CLIP UM Option 1 Option 2 Option 3 Option 4 Option 5 Option 6 Option 7

| No | Extension Number | Extension Name (20 characters) | CLIP ID | CLIP on Extension/CO | CLIR | COLR |
|----|------------------|--------------------------------|------------|----------------------|---------|---------|
| 1 | 101 | | 2125551212 | Extension | Disable | Disable |
| 2 | 102 | | | Extension | Disable | Disable |
| 3 | 103 | | | Extension | Disable | Disable |
| 4 | 104 | | | Extension | Disable | Disable |
| 5 | 105 | | | Extension | Disable | Disable |
| 6 | 106 | | | Extension | Disable | Disable |
| 7 | 107 | | | Extension | Disable | Disable |
| 8 | 108 | | | Extension | Disable | Disable |
| 9 | 109 | | | Extension | Disable | Disable |
| 10 | 110 | | | Extension | Disable | Disable |
| 11 | 111 | | | Extension | Disable | Disable |
| 12 | 112 | | | Extension | Disable | Disable |
| 13 | 113 | | | Extension | Disable | Disable |
| 14 | 114 | | | Extension | Disable | Disable |
| 15 | 115 | | | Extension | Disable | Disable |

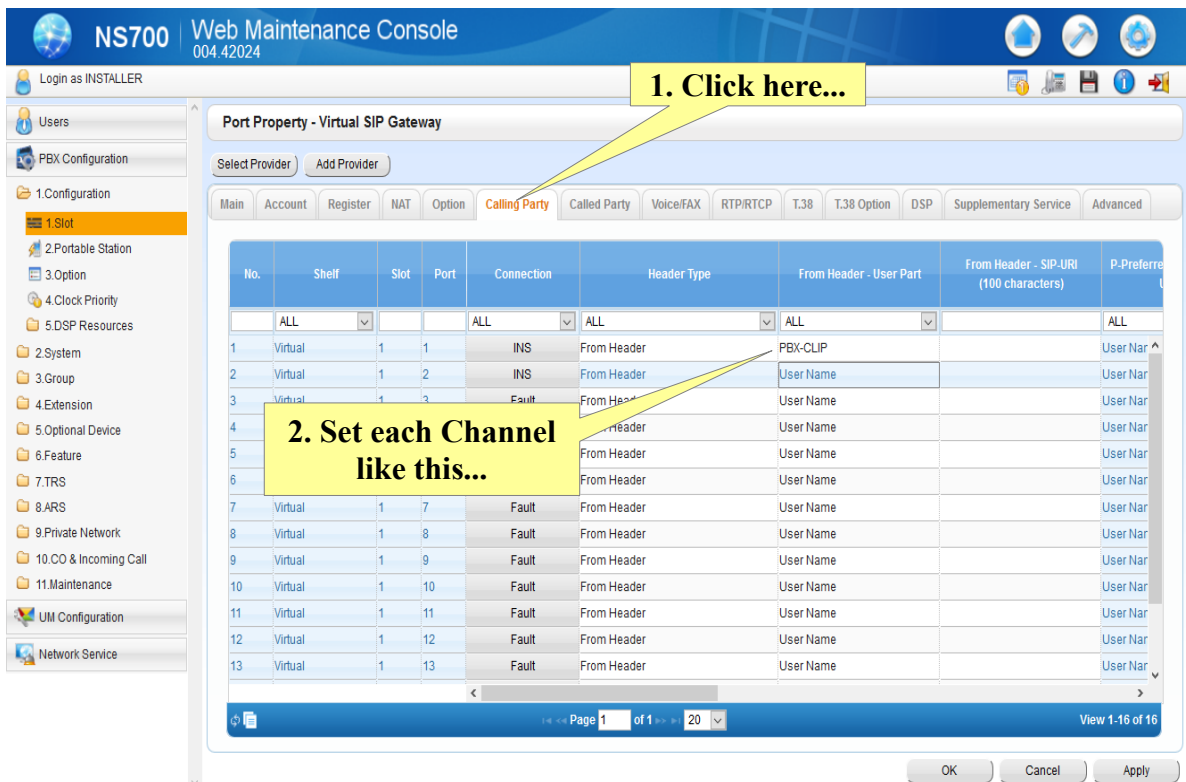
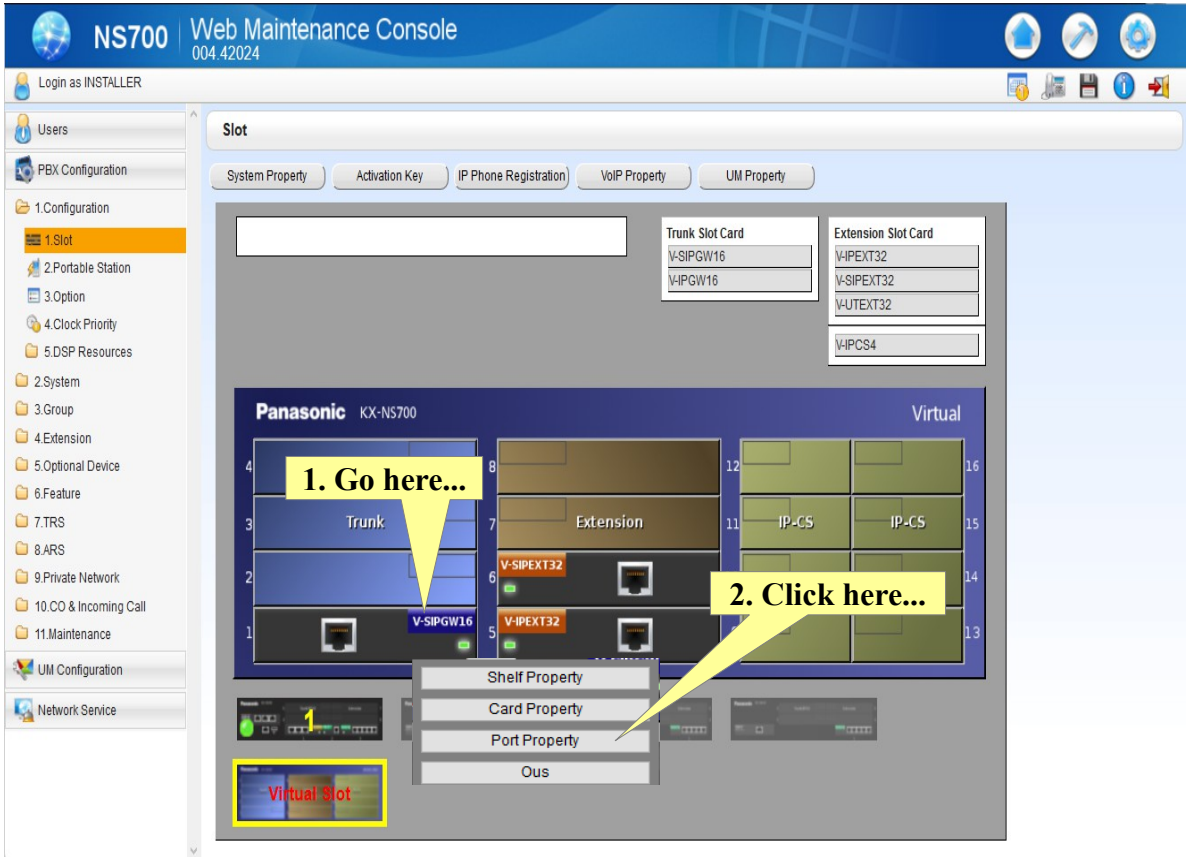
Page 1 of 2 100 View 1-100 of 108

OK Cancel Apply

Page 2

Set the KSU to use the PBX-CLIP Info:

Go to the V-SIPGW16 Virtual Card and click on Port Property



Page 3

Now when you make outgoing calls, the SIP Message (INVITE) should contain your DID (CLIP) Number.

CLIP:

Calling Line Identification Presentation